



AUSTRALIA'S PREMIUM
LIGHT INDUSTRIAL ROLLING GRILLE

Roll-A-Grille®

COMMERCIAL ROLLING GRILLE



The Roll-A-Grille® Security commercial rolling grille successfully combines medium level security with unimpeded visibility and a high level of airflow.

Applications include shop fronts, pedestrian entrances, cash counters, arcades and additional security to window areas.

FEATURES

- Constructed from aluminium tubing in popular brick pattern providing airflow.
- Connected with moulded nylon or aluminium links providing a secure operable curtain.
- Extruded bottom rail can be fitted with concealed single or two way lock or lockable shoot bolts.
- Large openings can be provided with removable centre or corner mullions.
- Available in anodised matt natural, matt medium bronze or matt black finish. Powder coat and other colours available on request.

ROLLER DRUM

Manufactured from either 229mm or 150mm diameter spiral ducted tube attached to self lubrication drum wheel and bearings rotating on a 33mm steel shaft. The shaft shall be fitted with helical springs designed to counterbalance the curtain weight throughout its operation.

The drum shall be designed to give minimum deflection over the span.



Doors & Openers®

THERE'S SO MUCH MORE BEHIND A B&D DOOR

Call **13 62 63** or visit www.bnd.com.au for further information.

*For full warranty conditions see back page.

THERE'S SO MUCH MORE BEHIND A DOOR

SIZES

Opening size up to 3700mm high or 3600mm wide, hand operation.

CURTAIN

Constructed of 12.7mm aluminium tubes at 50mm centres, connected with 10 x 20 x 10mm nylon links.

BRACKETS

The brackets are fabricated from 90mm x 40mm mild steel slotted angle as standard.

OPERATION

Designed for manual hand operation as standard, motorisation is not recommended.

FINISH

Standard aluminium colours are anodised matt natural, matt medium bronze and matt black. Other colours and powder coat finishes also available on request.

BOTTOM RAIL

90mm x 20mm extruded aluminium section incorporating locking device and concealed locking rods and optional PVC buffer.

SIZE GUIDE

Size 48mm x 30mm extruded aluminium with false back for concealed fixings.

LOCKING

Shall be centrally mounted, two way Mortice Key Lock or sliding shoot bolt locking mounted within the bottom rail.

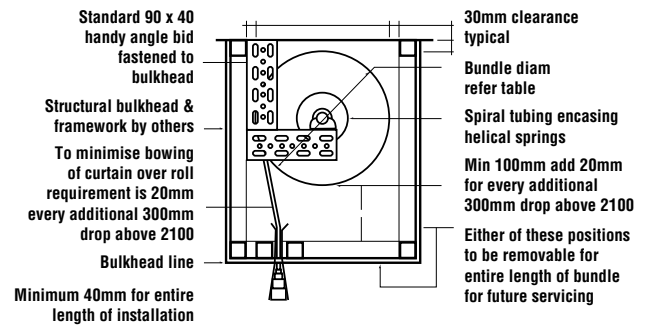
MULLIONS

Shall be one piece extruded aluminium section and shall be used for wide openings and multiple door installations. Mullions shall be 'lift out type' with shoot bolts to base. Special wide mullions fabricated from aluminium sheet shall be used when two grilles meet at an angle and no room exists for stacking (refer mullion details).

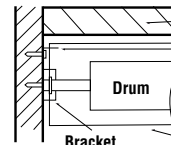
BUNDLE DIAMETRES FOR STANDARD & SECURITY

DROP	1200	1500	1800	2100	2400	2700	3000	3300	3600
229mm DRUM	315	330	350	370	370	370	410	410	410
150mm DRUM	300	310	320	330	340	360	370	390	415

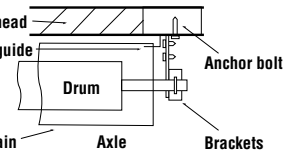
BULKHEAD DETAILS



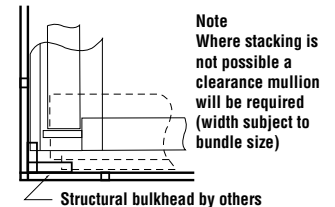
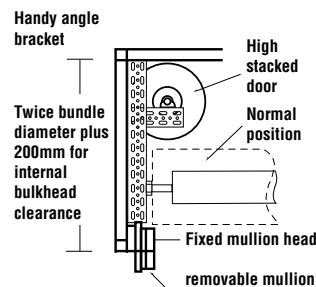
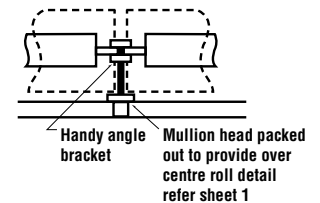
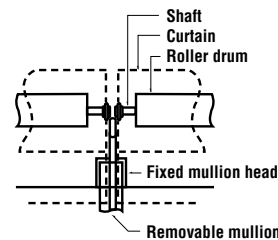
OUTSIDE JAMB FIXING



INSIDE JAMB FIXING



MULLION DETAILS



YOUR **B&D REPRESENTATIVE** IS:

International Customers call **+61 2 9722 5555**
fax **+61 2 9771 6385** or email **bndint@bnd.com.au**

B&D Doors has offices servicing all states.
For more details on this product or our other ranges,
call **13 62 63** or visit **www.bnd.com.au**

Notes / Information

- B&D Roll-A-Grille® Security Doors are covered by a 12 month warranty, for complete door and parts, as recommended in the door's handbook. Full details of the warranty are available from www.bnd.com.au. 12 month warranty only applies to doors purchased and installed in Australia or New Zealand. Warranty only valid if warranty conditions are met.
- For areas within one kilometre of a corrosive environment eg. salt air or industrial fallout, special care and maintenance are generally required for metal products. Consult B&D or your B&D Accredited Dealer for advice.
- The company reserves the right to make changes or improvements to the products or accessories without notice and without incurring any obligation to make similar changes or improvements to goods previously ordered. The company also reserves the right to site touch-up of colour finishes as deemed necessary by the Company. Specifications subject to change without notice.
- Roll-A-Door and Nylofelt are trademarks of B&D Australia Pty Ltd. Abuse of these trademarks will result in legal action.
- B&D products have many patents and registered designs applicable. B&D Roll-A-Grille® Security Doors are Australian made.
- Colorbond® and Zinalume® are registered trademarks of BlueScope Steel Limited.
- While BlueScope Steel Limited is our preferred supplier, steel products from other sources may also be used.
- Details correct at date of publication.



Doors & Openers®

THERE'S SO MUCH MORE BEHIND A B&D DOOR

an  **alesco** company